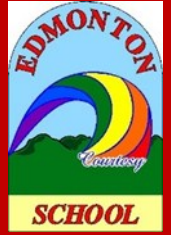


27 August 2025

Edmonton Primary School

School Newsletter



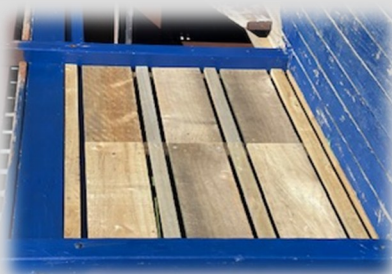
Principals Korero

Kia ora, Talofa lava, afio mai, 'nāmāstei , pai
ata, Kuja hapa, greetings, สวัสดี, 欢迎 and
malo e lelei, Salaam+

On Saturday the hard work began to make the repairs to the boat before the big day to paint it. Most of the woodwork has been completed and now the next job is to undercoat the new woodwork. Thank you everyone who gave us their options for the boat colours, The colours have been selected and we are nearly ready for the big day of painting in the holidays . It is Sunday September 27. It will be a wonderful day seeing the boat completely transformed back to its glorious self.

On Tuesday our Netball teams played remarkably well . I am very proud of them all. Thank you to Mrs Cunningham and the students who have helped run the practice sessions.

Margaret Samson (Principal)



Contact Us:

1-29 School Road, Te Atatu
South

Phone:

(09) 838 9318

Email

office@edmonton-primary.school.nz

School Hours

8:55am—3:00pm

TERM DATES 2025

Term 3

Monday 14th July to
Friday 19th September

Term 4

Monday 6th October to
Tuesday 16th December

TERM DATES 2026

Term 1

Tuesday 3rd February to
Thursday 2nd April

Term 2

Monday 20th April to
Friday 3rd July

School Docs

Please login to School Docs to have a look
at our current Policies & Procedures
Community User: Edmonton
Password: Respect

What's Coming Up

2025

TERM 3 * 14th July—19th September

- | | |
|---|---|
| • Friday 29th August | Yellow Mufti Day to support Cancer Society |
| • Monday 1st September | Water Skills for Life (Yrs 2—6) |
| • Friday 5th September | Whole School Assembly (Rooms 9 & 5 hosting) |
| • Friday 5th September | Scholastic Book Club Orders—Issue 6 due back |
| • Monday 8th September | Water Skills for Life (Yrs 2—6) |
| • Monday 15th September | Water Skills for Life (Yrs 2—6) |
| • Wednesday 17th—Friday 19th September | Year 5 & 6 Camp—Carey Park |
| • Friday 19th September | Last Day for Term 3 |

TERM 4 * 6th October—16th December

- | | |
|--------------------------------|---|
| • Monday 6th October | First Day for Term 4 |
| • Wednesday 8th October | School Photos |
| • Monday 27th October | Labour Day Holiday |
| • Friday 12th December | Last Day for Children (12:05pm Finish) |
| • Monday 15th December | Teacher Only Day |
| • Tuesday 16th December | Teacher Only Day |

2026

TERM 1 * 3rd February—2nd April

- | | |
|-------------------------------|-----------------------------|
| • Tuesday 3rd February | First Day for Term 1 |
| • Friday 6th February | Waitangi Day |
| • Thursday 2nd April | Last Day for Term 1 |

TERM 2 * 20th April—3rd July

- | | |
|----------------------------|------------------------------|
| • Monday 20th April | First Day for Term 2 |
| • Monday 27th April | Waitangi Day Observed |
| • Monday 1st June | Kings Birthday |
| • Friday 3rd July | Last Day for Term 2 |

TERM 3 * 20th July—25th September

- | | |
|--------------------------------|-----------------------------|
| • Monday 20th July | First Day for Term 3 |
| • Friday 25th September | Last Day for Term3 |

TERM 4 * 12th October—15th December

- | | |
|--------------------------------|---|
| • Monday 12th October | First Day for Term 4 |
| • Monday 26th October | Labour Day |
| • Tuesday 15th December | Last Day for Term 4 (12:05pm Finish) |

Save the Date

Farewell to our Japanese Students



UNIFORM REMINDER

We have noticed a lot of children are not wearing the correct uniform. Please see our uniform guidelines below.

EDMONTON PRIMARY SCHOOL UNIFORM

Our school uniform is available from any shop but the following stores stock plenty of options: Kmart, Warehouse, Farmers & Postie Plus.

Listed below are our uniform requirements.

- Plain red top with a collar or a red skivvy

- Plain red sweatshirt

- Plain black shorts, skorts, skirt, track pants, trousers

- Plain red or black sunhat/cap worn in term 1 and term 4

- Black sandals or shoes with black laces. No boots

- Black socks

No long sleeves or T-shirts showing under short sleeved tops.



KIDS PAGE

Student of the Week:

Sidney Room 9

For

**Covering other peoples
crossing duties**

AN INTERESTING FACT:

*Kiwi is the only bird in the world
with nostrils at the end of its
beak*

CLASS ATTENDANCE

This Week

First Place:	Room 5
Second Place:	Room 10
Third Equal:	Room 8
Fourth Place:	Room 11
Fifth Place:	Room 9
Sixth Place:	Room 3
Seventh Place:	Room 7
Eighth Place:	Room 2
Ninth Place:	Room 4

You are Joking:

How do trees get online? They just Log In.

The Kiwi is truly unique

It is a bird, but it has features more characteristic of a mammal.

For example:

It has tiny wings but cannot fly.

It has loose feathers that are more like fur and unlike other birds the feathers moult throughout the year.

It is the only bird in the world with nostrils at the end of its beak.

It uses sensory pits at the tip of the bill to find food.

It has no tail feathers but does have whiskers, like a cat.

It has marrow in its bones, just like a human.

Very unusually, females have two ovaries, most birds have only one.

Kiwi are mostly nocturnal

Which means that they come out of their burrows after nightfall to forage for insects, grubs, earthworms, fallen fruit and native plants. Other night birds are equipped with big powerful eyes so they can see at night.

The kiwi is different. It has a well-developed sense of smell with the part of the brain controlling this sense being much larger and more like a mammal's structure than a bird's. Kiwi have small eyes do not see as well at night, instead, it feels, smells and hears its way around.

The Kiwi egg

Kiwi have one of the largest egg-to-body weight ratios of any bird. The egg averages 15% of the female's body weight (compared to 2% for the ostrich).

Incubation is done by the male and can take anything from 74-90 days. When first hatched, the belly of the chick is swollen with yolk which will sustain them for their first few days. Female kiwi grow to be larger than males (up to 3.3 kg and 45 cm).

Feeding

Kiwi are omnivorous and although worms form a major part of their diet, they will also readily eat woodlice, millipedes, centipedes, slugs, snails, spiders, insects, seeds, berries and plant material. Kiwi feed at night and probe into the ground with their bill up to a depth of 12cm.

Big ear openings provide a very good sense of hearing and the long, graceful whiskers and sensitive bill help it locate food in the soil and leaf litter. Kiwi chicks are instinctive feeders and are not taught by parent birds to forage for food.

Threats

Stoats, ferrets and weasels are the biggest threat to the survival of Kiwi, closely followed by cats and dogs. Only 5% of all Kiwis hatched in the wild survive to adulthood.

The feather patterns allow kiwi to protect themselves by disappearing into the dark and fading into the forest vegetation. When distressed a kiwi freezes, disguising itself from aerial predators.

The kiwi is often given away by the sound of its uniquely placed 'noisy' nostrils at the tip of its bill. As it walks it taps the ground with its bill, probing the soil and sniffing loudly.



Scholastic Book Club - Issue 6
Available now! Orders due back
to school office
by Friday 5th September



Please make sure you vote in our
Board of Trustees Elections.
There are 3 positions to fill.
Please Cast YOUR vote NOW!

School Lunches

School lunches are available as follows

Wednesdays – Sushi

Thursdays – Bakery

Fridays – Bakery

Order forms are available in your child's classroom. **One form per child is required**

Payment can be made online to
Edmonton School Board of Trustees
12 3038 0453332 00

Please make sure that payments are made on the day of order

and that the child's name and 'lunch' are noted on the payment

Important Information

Contact Details: It is very important that we have up to date contact details for parents/ caregivers. To ensure that we are able to contact whanau please contact the school office with any changes or additions.

After Hours : Unless your children are in Before or After School Care. Please make sure they are not at school before 8:30am and they are picked up and off of the school grounds by 3:10pm

Absence: Please use the Skool Loop App to report an absence or leave a message on the school phone Absence Line. We need to know when you children are going to be away to avoid them being marked as 'truant'.

Collecting Students during the school day: If you need to collect your child for an appointment during the school day please contact the office **09 838 9318** or email **office@edmonton-primary.school.nz** to arrange. If possible please arrange to collect your child before or after the morning tea and lunch breaks, as it is difficult to find children during these times. Morning tea is 10.30 am until 11.00 am, lunch from 12.30 pm until 1.20 pm.

Arriving Late: Children must report to the office if they arrive after 8:55am

Before & After School Care & Holiday Program

We have **Before and After school care** available on site. The program runs from 7:00 am until 8:30 am in the mornings and then from 3:00 pm until 5:30 pm in the afternoons.

This service also runs a **Holiday Program** during the holidays.

EDMONTON SCHOOL OSCAR PROGRAM

For information about before school,
after school care and holiday programme or enrolment forms
Please contact Office Ph 8389318 or Claire Busby 027 550 5197



Rangeview Intermediate School



ENROL NOW FOR 2026

5 KERU PLACE TE ATAU SOUTH
OFFICE HOURS: 8:30AM - 4:30PM

ENROL ONLINE

www.rangeview.school.nz

SUPER
SEVENS

FRIDAY
05 DECEMBER



WHAT IS YOUR CHILD MISSING OUT ON?

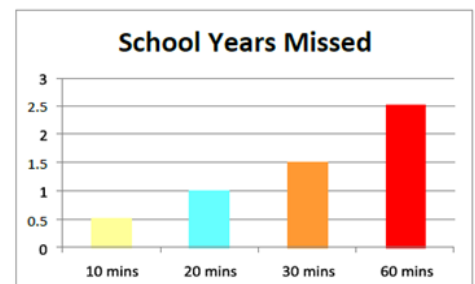
JUST A LITTLE BIT LATE FOR SCHOOL or LEAVE A LITTLE EARLY DOESN'T SEEM MUCH BUT

If your child is missing	That equals	Which is	And over 13 years of
10 minutes per day	50 minutes per week	Almost 1.5 weeks of the	Almost half of a school year
20 minutes per day	1 hour 40 minutes per	Over 2.5 weeks per	Almost 1 school year
Half an hour per day	Half a day per school	4 weeks per school year	Almost 1.5 school years
1 hour per day	1 day per school week	8 weeks per school year	Over 2.5 school years



Did you know that your child's best learning time is the start of the school day?
That's when every minute counts the most.
School starts at 8:55am.

EVERY MINUTE COUNTS



DOES ATTENDANCE REALLY MATTER?

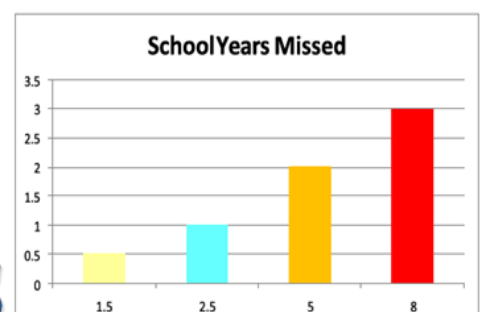
1 OR 2 DAYS A WEEK DOESN'T SEEM MUCH BUT...

If your child misses	That equals	Which is	And over 13 years of schooling that's
Half a day per week	20 days per year	1 month per school year	Almost 1.5 school years
1 day per week	40 days per year	2 months per school year	Almost 2.5 school years
2 days per week	80 days per year	4 months per school year	Over 5 school years
3 days per week	120 days per year	Over half a school year	Almost 8 school years

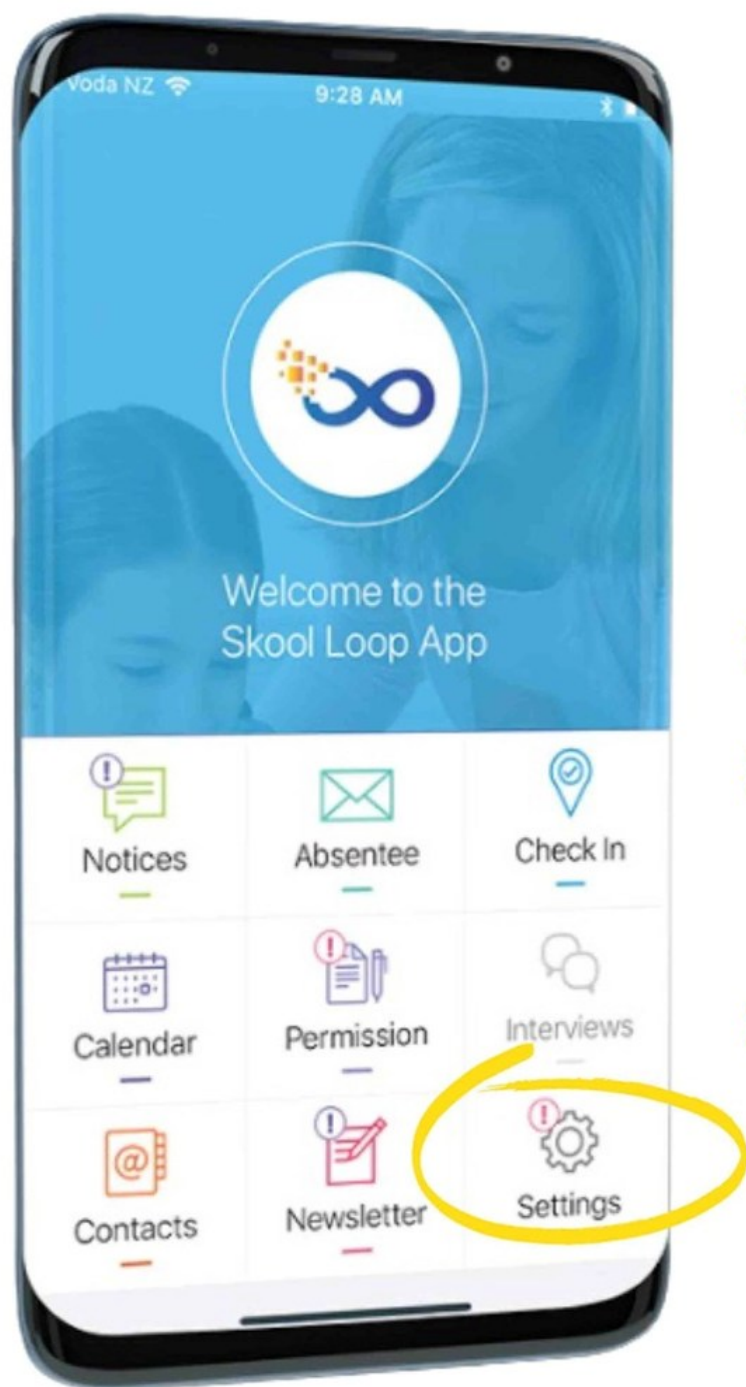


If you want your child to be successful at school then
YES, ATTENDANCE DOES MATTER!

EVERY DAY COUNTS



HOW TO SUBSCRIBE TO NOTICE GROUPS



TO JOIN YOUR SKOOL LOOP APP NOTICE GROUPS, SIMPLY FOLLOW THE STEPS BELOW:

- > Go to the 'Settings' tile in the bottom right hand corner of the Home Screen
- > Go to 'Subscribe to groups'
- > Tap to select the group/s you would like to receive notifications from
- > You're good to go - you will now receive all notices sent to the groups you have subscribed to

NEED MORE INFO?

Call Skool Loop Aus on 1800 203 493

Call Skool Loop NZ on 0800 238 379





SCRATCHPAD

TECHNOLOGY LEARNING CENTRES

Get your children to become creators of technology

- Coding
- Minecraft modding
- Robotics
- Roblox development
- 3D printing
- And much more...

scratchpad.co.nz (09) 8150825 info.henderson@scratchpad.co.nz

Your children are amazing already. We just help them prove it.

Henderson Ph 836 3123
numberworksnowords.com/nz

**NumberWorks
'nWords**

TIUION
CONFIDENCE
RESULTS

**ENGLISH
& MATHS**
Free assessment
Book now!

**Need a home loan for
your next move?**

Call Rob for personalised mortgage advice to help you achieve your goals!
First Home Buyers - Refinancing - Property Investment - Bridging Finance

You relax, we'll take care of everything



**CALL ROB
GILFILLAN**

Your local Mortgage Adviser **022 696 1122**

THE
Mortgage
SUPPLY CO.



**EDMONTON COMMUNITY
Kindergarten**
nurture grow learn

**New Hours
Mon-Fri
8.00-3.30**

Teacher ratio 1:10 • All Day and Sessional
Children aged 2 - 5 years
Enquiries and visits welcome

247 Edmonton Road, Te Atatu South • Phone 836 3566
info@edmontonkindy.co.nz • www.edmontonkindy.co.nz

**3rd family
member FREE**
and other specials available.

Waterhole Swimming Club Inc.

Caters for swimmers of all ages both
competitive for all levels and fitness
for other aquatic sports.

Squads at Westwave in
Henderson and Waterhole in Glen Eden.

Learn to swim for all ages also available at Glen Eden.

Phone 09 8182312

or email waterholeswimcentre.kiwi
to arrange a free assessment.



HELP

Help us to continue this free service for your
local school next year by advertising in this newsletter.
What better way of keeping your business in front of the local
community and help your school. The cost is very reasonable!

Call Newsletters Unlimited

09 817 3867

www.newslettersunlimited.co.nz

BARFOOT & THOMPSON

Thinking of your next move?

I'm just a call away for friendly, no pressure advice.
Whether it's Buying or Selling your Home or
Managing your Investment Portfolio.

Let's talk and make a plan!



PAUL FOX
Glendene Branch Manager

0220 890 828
pfox@barfoot.co.nz

Protégé
HAIR DESIGN

Your secret to great hair!

4343 Gt North Road
Glendene 09 836 4596

protegehairdesign.co.nz

New Clients 15% off
*Terms & Conditions Apply



PERFORMING ARTS FOR KIDS
CLASSES & HOLIDAY FUN!
TAUGHT BY INDUSTRY PROFESSIONALS



**Act One
Kids Drama Classes**
WEDNESDAYS 3:15PM
TERM TIME

HENDERSON BAPTIST CHURCH
\$225 PER CHILD

**Shine on Stage
Holiday Programme**
FIRST WEEK SCHOOL HOLIDAYS
9AM - 2:45PM
WAITAKERE TOWNSHIP HALL
\$230 PER CHILD

LIMITED SPACES - BOOK NOW

actoneproductionsltd.com



**Affordable
& Quality
Massage
Services**

422 Great North Road,
Henderson
P. 09 835 1303



As low as **\$70** for
a 60mins session
Full Body Hilot
Massage